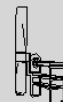


# FLOCKING FOR OBJECTS



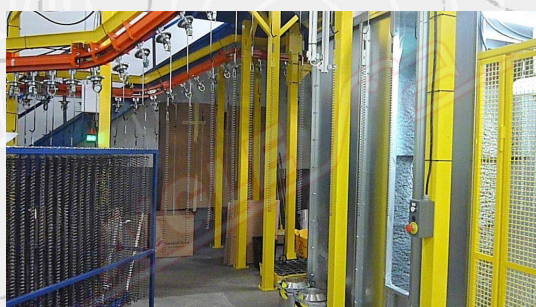
## PAINTING EQUIPMENT FOR SPRINGS



Over the years, **AIGLE** has developed several painting equipment for metallic springs, used mainly in the automotive industry. The painted springs are used in the systems for opening doors. The paint protects the spring from wear and tear over the time.

**AIGLE** has designed and manufactured complete painting systems consisting of:

- A system for loading, unloading or handling springs with robots and air transporters
- A system for painting by spray
- An oven for paint drying
- A cleaning cabin through nozzles that blow air supplied by dedicated fans. A suction system recovers in filter sacks the excess flock
- An electric board



This kind of plants allows:

- high productivity
- uniformity of application of paint around the spring
- flexibility of the system for springs of different diameter and length

### TECHNICAL DATA

Power supply

400 V/50 Hz/three-phase

Installed power

to be defined

Compressed air

7±1 Kg/cm<sup>2</sup>

Member of CISO Federation

