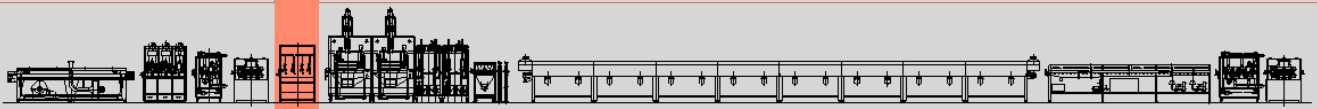


PROFILES FLOCKING LINE



Adhesive Application Cabin - mod. ADP6



The **Adhesive Application Cabin mod. ADP6** is completely built in stainless steel and is equipped with anti-spark exhausters for adhesive fumes.

The cabin is equipped to apply glue onto profiles using distributing brushes which can be easily replaced and oriented according to production needs. In order to avoid vibrations, each brush is mounted on its own independent structure.

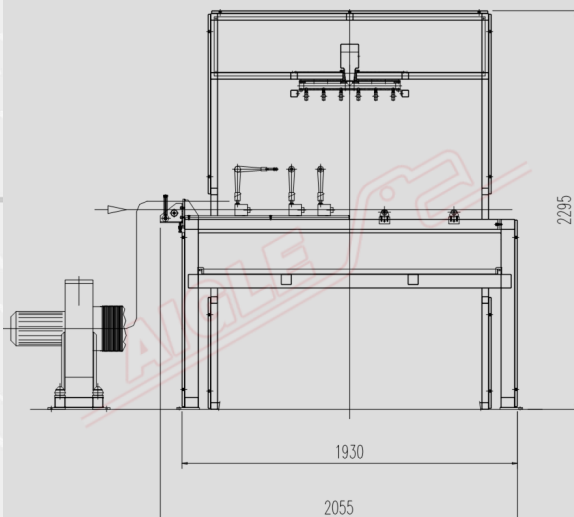
A very precise peristaltic pump applies glue to the brushes. The cabin is equipped with rear inspection doors for easy cleaning, maintenance and filter replacements. An internal light is also provided.

Adjustable rollers and supports are provided inside the unit and are suited to mount specific profile guides.



TECHNICAL DATA

| | |
|---------------------------|-----------------------------------|
| Number of adhesive tanks | 1 |
| Number of brushes | 6 |
| Peristaltic pump capacity | 1300÷1400 ml/min. (adjustable) |
| Air suction | 4000 m ³ /h |
| Power supply | 400 V/50 Hz/three-phase |
| Installed power | 3 kW |



Member of CISQ Federation



AIGLE