

# FLOCKING FOR OBJECTS

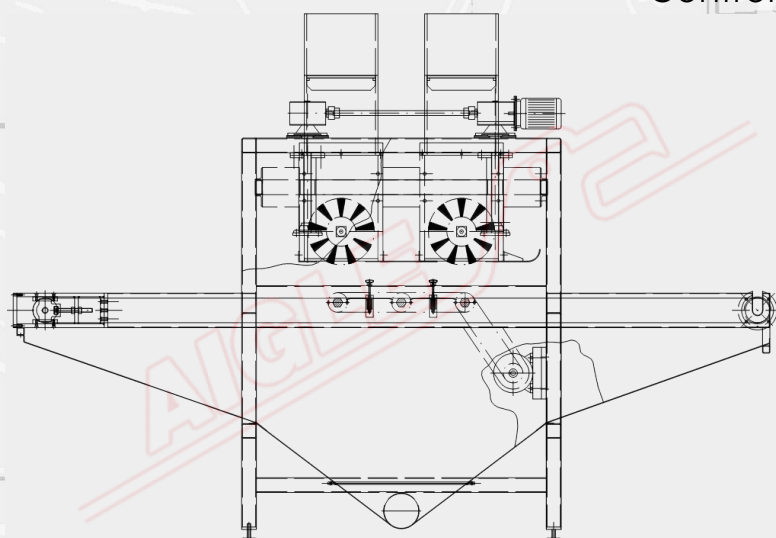
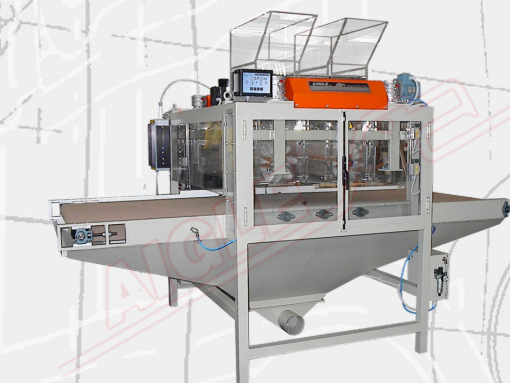


## Flocking Machine - mod. TT2

The **Flocking Machine mod. TT2** is designed to flock objects and flat surfaces.

The machine consists of:

- One variable speed motorized conveyor belt made with a fiberglass net
- Two Plexiglas flocking hoppers
- Two rotating brushes inside the hoppers
- An inverter equipped with speed controls, which controls brush rotation through insulated transmission shafts
- A motorized device to adjust the gap between the flocking hoppers and the conveyor belt
- Beater bars, below the conveyor belt
- A suction blade on the conveyor belt (optional) and a flock collector below the hoppers, connected to a fan equipped with sleeve filters and a flock recovery bag
- Access doors to protect against flock pollution
- **Electrostatic Generator** , with 100 kV maximum output
- Control board



### TECHNICAL DATA

|                 |                         |
|-----------------|-------------------------|
| Useful width    | to be defined           |
| Power supply    | 400 V/50 Hz/three-phase |
| Installed power | 6 kW                    |
| Compressed air  | 7 ±1 Kg/cm <sup>2</sup> |

Member of CISQ Federation



# AIGLE