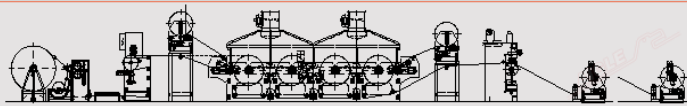


LAMINATING



Hot Melt Laminating Line - LHM 3L

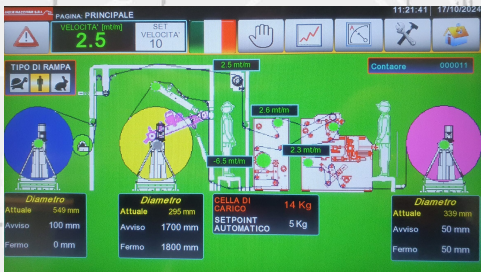


Application systems for **hot-melt laminating** lines:
Smooth or engraved cylinder system Slot system.

Aigle collaborates with Bridarolli Srl in the use of hot-melt systems. The combination of these experiences makes it possible to offer technology that is reliable and well-established but always oriented toward innovation and research.

Characteristics of the two application systems:

- **Smooth cylinder system:** allows the application of an average amount of hot-melt component and can apply only single uniform layer of adhesive.
- **Engraved cylinder system:** allows spot adhesive application, making the coated/ coupled material breathable and, therefore, soft. Aigle has developed with Bridarolli an innovative three-layer laminating system for e.g. (membrane fabric + B-fabric) to be done in one machine pass. To achieve this, it is essential to have a very accurate control of the tensions of the three supports
- **Slot system:** allows a wide variability of adhesive application weight: from 2-3 g to 10 g/m² for non-total covers or up to 500 g/m² for total covers. With this Aigle/ Bridarolli Slot system, the change of adhesive weight is easier than with the classic thousand-point coating system. In fact, there is no need for the replacement of the cylinder or the related investment for the purchase of the cylinder itself. The use of Bridarolli Srl **melts** and **extruders** ensures proper feeding of the hot-melt adhesive to the application device.

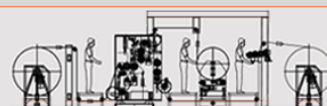
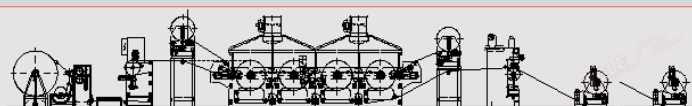


Member of CISO Federation



AIGLE

LAMINATING



The application of hot-melt adhesive/ materials in industry are extremely varied:

- **Plasticized materials:** fabrics used, for example, to produce plasticized tablecloths, coated with thermoplastic hot-melt.
- **Back coating:** for upholstery fabrics and blackout finishes (by coating thermoplastic EVA hot-melt)
- **Laminated materials:** (nonwoven fabrics/ fabrics, foams, plastic films, etc.) using both hot-melt thermoplastic adhesives and reactive PUR adhesives, materials for medical, automotive and upholstery industries, for example, are produced.
- **Coated materials:** used as reinforcement fabrics (nonwoven fabrics/ fabrics etc. coated with thermoplastic hot-melt)
- **Self-adhesive coated materials:** these materials are coated with thermoplastic hot-melt adhesives and become adhesive when brought to melting temperature. They can be used for various purposes; for example, nonwoven fabrics are used to cover interior surfaces of vehicles and in the footwear industry to produce insulation materials.
- **Breathable but waterproof laminated materials:** used in apparel and footwear and are obtained by laminating a membrane (e.g., Goretex®) to fabrics.

TECHNICAL DATA

Power supply	400 V/50 Hz/three-phase
Installed power	40 kW
Compressed air	7±1 Kg/cm ²

Member of CISO Federation



AIGLE